



1986



HY Makina

HASAN YURDUSEVEN CONSTRUCTION MACHINERY

*Leading
Construction Machinery
Brand of Turkey*



Experience



Reliability



Quick Solutions

www.hymakina.com



HY Makina
HASAN YURDUSEVEN CONSTRUCTION MACHINERY

Leading Construction Machinery Brand of Turkey



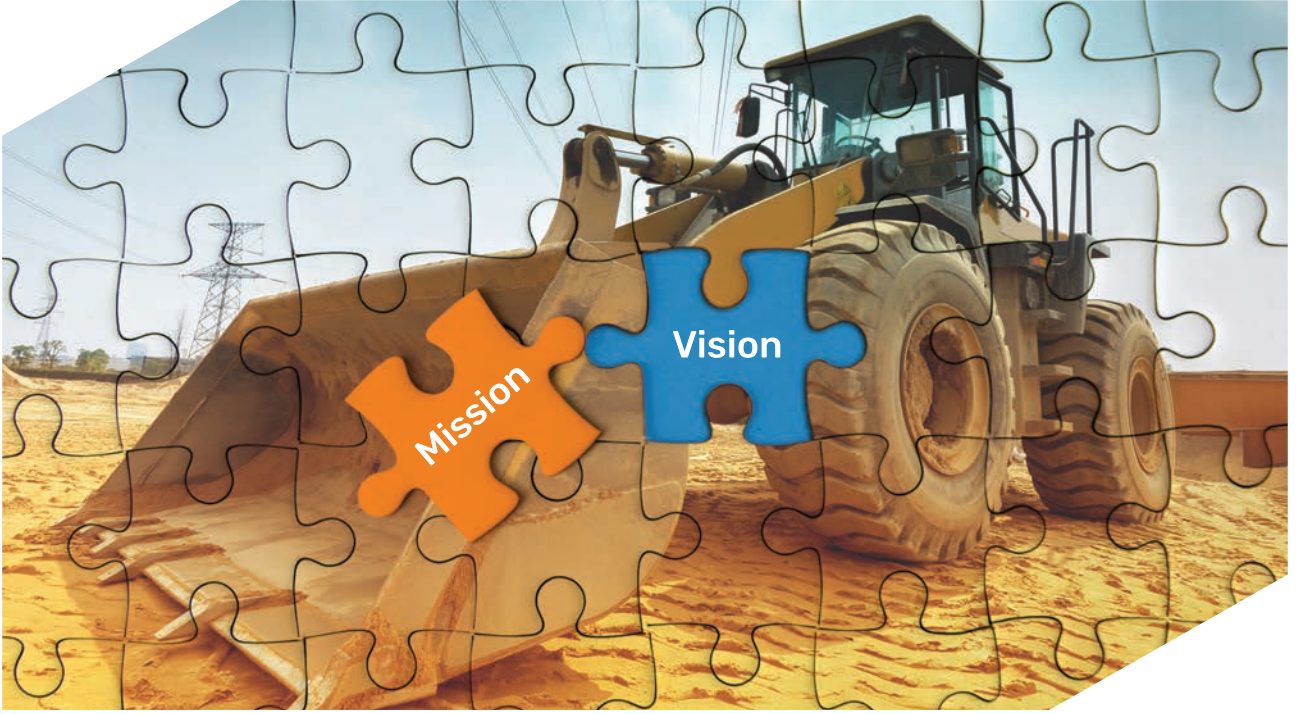
About Us



As HY Makina, founded by Hasan Yurduseven, our main goal is to be a solution partner for both public and private sector entrepreneurs regarding especially used construction machinery purchase and providing support in after-sale period.



Mission & Vision



Mission

With its experience and know-how in product development in Japan, Europe and Turkey, Hasan Yurduseven Construction Machinery seeks to offer optimum solutions to meet the needs of mining, stone quarry, marble, road services, excavation and undertaking sectors, industrial groups and investors operating in our country.

Vision

Our vision is to have a common action with our business partners from all regions; to provide a constant and reliable service to our customers and to move quality into maximum levels.



Sale and Service Network



Europe

- United Kingdom
- Netherlands
- Belgium
- Germany
- Ireland
- France
- Sweden
- Finland
- Switzerland
- Spain
- Italy
- Poland

Africa

- Morocco
- Algeria
- Tunisia
- Egypt

Asia

- Pakistan
- India
- Thailand
- Vietnam
- Malaysia

Middle East

- Iraq
- Iran
- Saudi Arabia
- United Arab Emirates
- Ummman
- Qatar
- Lebanon
- Israel
- Jordan
- Kuwait
- Bahrain

CIS

- Russia
- Ukraine
- Kazakhstan
- Azerbaijan
- Uzbekistan
- Georgia
- Tajikistan
- Turkmenistan
- Kyrgyzstan





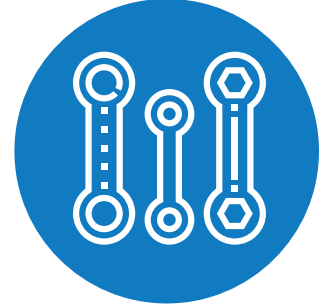
Products and Services



Construction
Machinery



Attachments



Spare Parts



Consultancy



Trustee



Operator Training



Automotive



Products

Construction Machinery



Rigid Dump Truck

Rigid Dump Trucks are off-highway trucks specifically engineered for use in high-production mining and heavy-duty construction environments. Rigid dump trucks are also used for transporting construction equipment from job site to job site.



Articulated Dump Truck

An Articulated Dump Truck is very large heavy duty type of dump truck used to transport loads over rough terrain, and occasionally on public roads.



Products

Construction Machinery



Crawler Excavator

A Crawler Excavator (or crawling digger) is a tracked vehicle designed to dig or grade, or move earth and large objects, and is classified by its mode of locomotion.



Wheeled Excavator

A Wheeled Excavator is a type of wheeled construction machinery used for digging in hard ground and loading purposes.



Products

Construction Machinery



Bulldozer

A Bulldozer is a large and heavy tractor equipped with a substantial metal plate (termed a blade) used to push large quantities of soil, sand, snow, rubble, or similar material during construction or conversion work and typically equipped at the rear with a claw-like device (termed a ripper) to loosen densely compacted materials.



Grader

A Grader is a form of heavy equipment with a long blade used to create a flat surface during grading.



Products

Construction Machinery



Wheeled Loader

A Wheel Loader is a four-wheel-drive heavy equipment machine used mainly to load and transport heavy loads, such as soil, rock, sand, demolition debris, etc. into or onto another type of machinery (such as a dump truck, conveyor belt, feed-hopper, or railroad car).



Backhoe Loader

A Backhoe Loader is a heavy equipment vehicle that consists of a tractor-like unit fitted with a loader-style shovel/bucket on the front and a backhoe on the back.



Products

Construction Machinery



Mini Excavator

A Mini Excavator is a tracked or wheeled vehicle with an approximate operating weight from 0.7 to 8.5 tonne used in small or medium landscaping, digging, trenching and drilling projects.



Forklift

A Forklift is a powered industrial truck used to lift and move materials over short distances.



Products

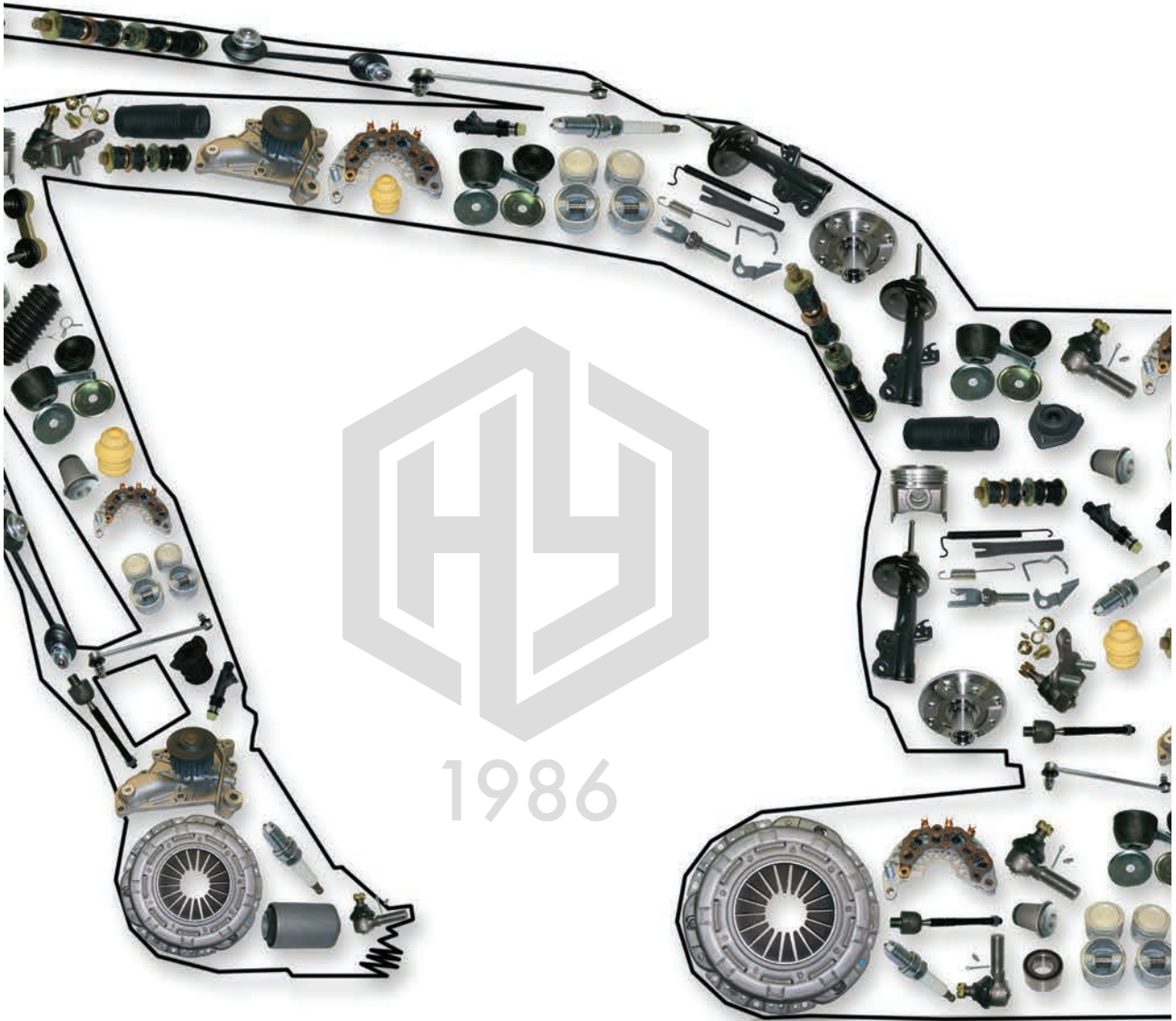
Attachments





Products

Spare Parts





Brands

KOMATSU

CATERPILLAR

HITACHI

HYUNDAI
HEAVY INDUSTRIES CO.,LTD.



CASE
CONSTRUCTION



 **TEREX**

LIEBHERR



JOHN DEERE



HIDROMEK

 **Kawasaki**

Linde

 **LIUGONG**

 **STILL**

TOYOTA



Services

Consultancy



We are ready to share our experiences with you..





Services

Trusteeship

1986

*You may leave your machines
to our area in safe..*



HY MakİNa
HASAN YURDUSEVEN CONSTRUCTION MACHINERY



Services

Operator Training



*You may contact us
for Operator Training and
License..*





Ancillary Services

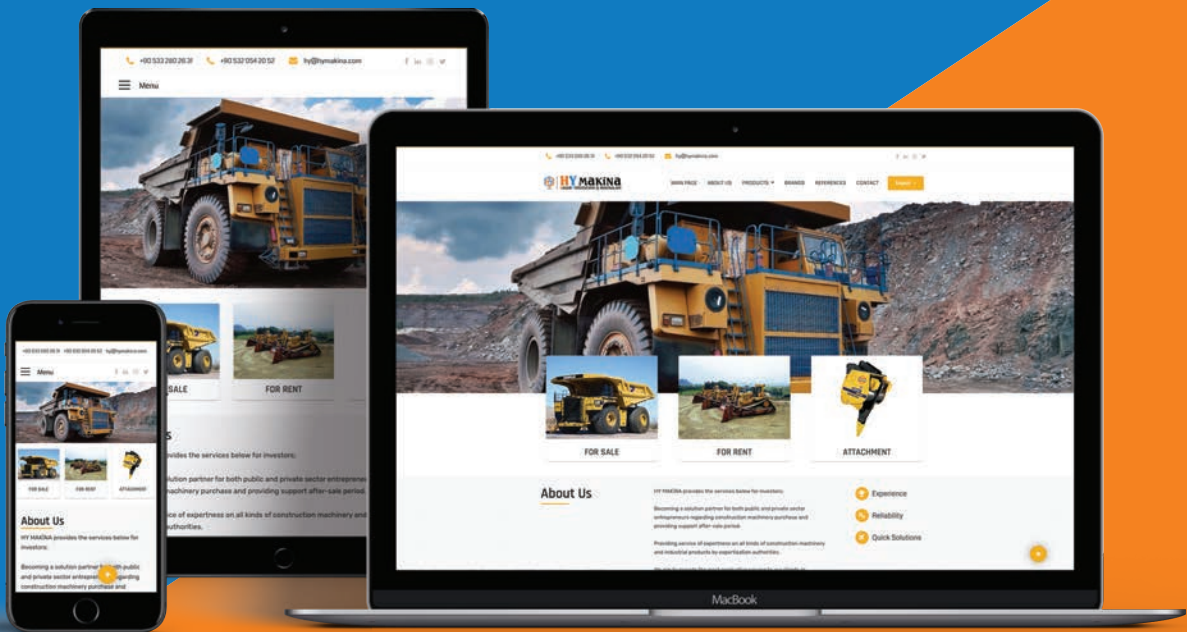
Automotive



Furthermore, we purchase and sell automotive as a part of ancillary services.



*Please visit our
website for further
information..*



www.hymakina.com





1986



HY Makİna

HASAN YURDUSEVEN CONSTRUCTION MACHINERY

*YOUR SOLUTION PARTNER
BY EXPERIENCED AND
QUALIFIED STAFF..*



Altinkale Mah. Akdeniz Blv. No: 217/A
Döşemealtı - Antalya / Türkiye



+90 530 321 53 70
+90 533 280 26 31



info@hymakina.com



www.hymakina.com